

What is our project about?

- Identify parasites in your state, specifically looking at *Echinococcus* spp. and the potential risk to humans and dogs.

Here's how you can help us!

- During the trapping season, instead of **discarding** your specimen, **save them for us!**

**PLEASE FOLLOW ALL
STATE TRAPPING
REGULATIONS AND
GUIDELINES!**

How to preserve the carcass:

1. Double bag and securely tie to prevent leakage of fluid
2. Place a specimen tag on the outside
3. Place the specimen and specimen tag in freezer
4. Visit our website, www.HerrinLab.org, for submission details!

Everyone can participate!

- This is a **statewide** parasite study!
- Licensed trappers from all over the state are encouraged to participate!
- This is an **ongoing project** that will take several years to complete.
- So, if you're not able to participate this year, there will be **another opportunity next year** as well.

Contact Us!

Facebook: @HerrinLab
Email: herrinlab@vet.k-state.edu
Phone: (785) 532-4430
<http://www.herrinlab.org/>

If you have any questions or comments, please don't hesitate to contact us!



Thank you for helping us complete this study!

Herrin Lab
Kansas State University
College of Veterinary Medicine
1800 Denison Ave.
Manhattan, KS 66506

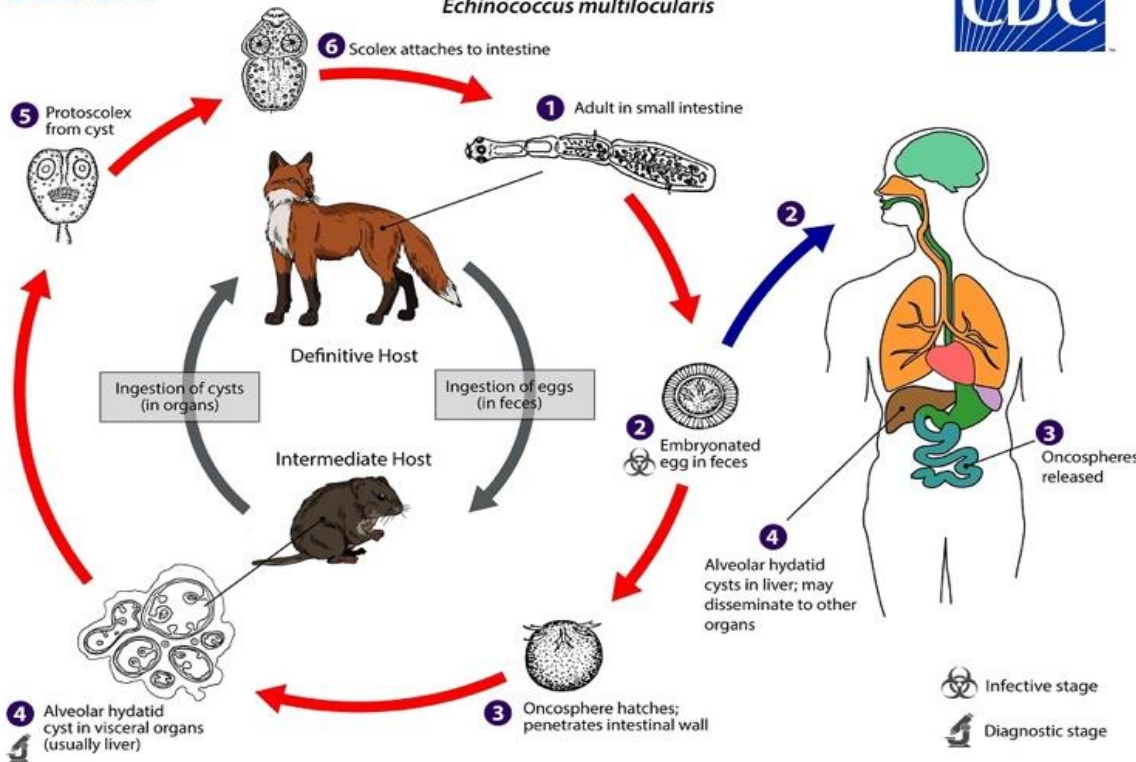
Echinococcus Study



Parasitology Department
Dr. Brian Herrin
Dr. Kamilyah Miller

*In partnership with your state Department
of Conservation and Natural Resources.*

Alveolar Echinococcosis
Echinococcus multilocularis



Does *Echinococcus multilocularis* infect humans?

- Yes, a disease is called Alveolar echinococcosis develops
- The larvae develop alveolar cysts in the liver and lung slowly overtime
- Humans cannot infect other humans; therefore, we are considered dead-end hosts
- Treatment unsuccessful and disease is potentially fatal

How can you protect yourself from contracting this tapeworm and disease?

- ALWAYS wear gloves when handling animal specimens
- Wash hands thoroughly after handling animal specimens.
- Always wear gloves or use a plastic bag to pick up animal feces

What parasites do coyotes carry?

- Internal parasites such as heartworms, roundworms, and tapeworms
- External parasites such as ticks, fleas, and mites

What is *Echinococcus multilocularis*?

- A small tapeworm that infects red foxes, coyotes, wolves, raccoon dogs, and domestic dogs and cats
- Hard to see with the naked eye, it infects the small intestine of the definitive host
- Adult worms produce eggs in the feces of infected animals

How do animals become infected?

- Predation by eating infected rodents
- Ingesting the infected eggs from the environment

How is the infection diagnosed in dogs?

- Physical exam at local veterinarian
- Fecal flotation confirmed through molecular testing

Where are *Echinococcus* spp. found in North America?

